



windows to work

Family Services

Supporting all people through
life's challenges and transitions.



windows to work

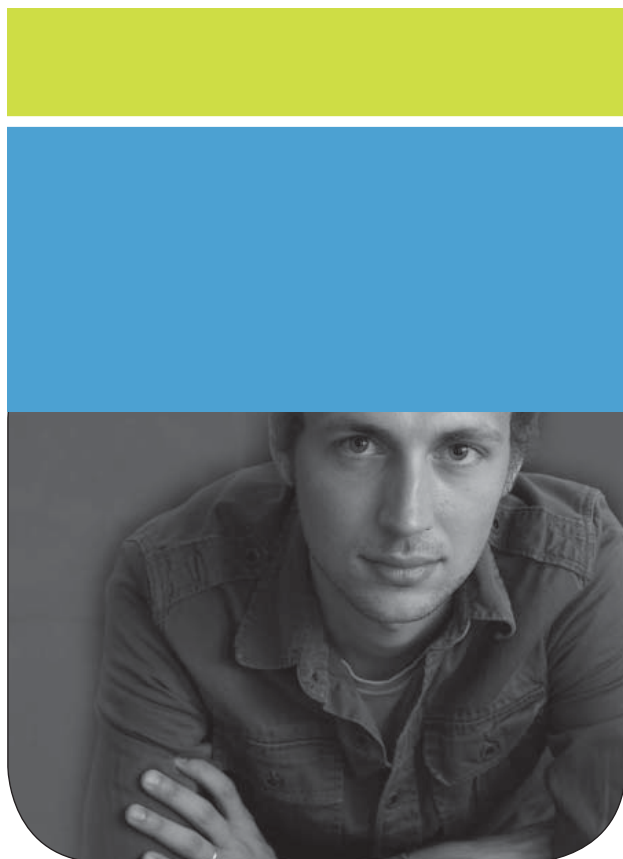
Family Services

300 Crooks Street, Green Bay, WI 54301
(920) 436-4360 ext. 1390

Family Services of Northeast Wisconsin, Inc.
(920) 436-6800 (800) 998-9609
www.familyservicesnew.org



Windows to Work is funded by the Bay Area Workforce Development Board and the Wisconsin Department of Corrections.



Program Overview

Family Services' Windows to Work program provides inmates from the Oshkosh Correctional Institution with education, support and other case management services. It is a voluntary program designed to assist incarcerated men in making a successful transition back into the community. The program's case managers serve as the client's advocate, working with the Division of Community Corrections and other corrections personnel to help participants get on track and start a new life.



Services Provided

Pre-Release Help: Participation in group and individual sessions will start six to nine months prior to release. Weekly groups will discuss information such as criminal and addictive behavior/thinking, general work skills and expectations, job search tools, financial literacy, rental education and community resources.

Post-Release Help: For a minimum of one year after release, Windows to Work case managers work with the client and their community corrections agent to help participants find and keep employment, locate suitable housing and transportation options, and provide connections for education, skills training, and supplies needed to successfully transition back into the community. Case Managers will also assist with:

- ◆ Employability skills training such as resume writing, job search plans and interview techniques
- ◆ Interpersonal and social skills training
- ◆ Education Advancement
- ◆ Setting and obtaining goals
- ◆ Budgeting and money management
- ◆ Parenting information and techniques
- ◆ Counseling, as needed, to assist with addiction issues, anger management, and increasing self-esteem

For more information about the program, call (920) 436-4360 ext. 1390 or visit www.familyservicesnew.org/windows-to-work.

Program Eligibility

All inmates of Oshkosh Correctional Institution can voluntarily participate in the program.

Participants must also:

- ◆ Be planning release to Brown, Outagamie, Manitowoc, Sheboygan, Shawano or Oconto County
- ◆ Be released in the next six to nine months
- ◆ Have at least one year post-release community supervision
- ◆ Be willing and able to work full-time (or part-time if in school)
- ◆ Have met the recommended supervision level by the Department of Corrections

Windows to Work Mission...

The Windows to Work program will promote self-sufficiency for individuals returning to the community through the development of constructive skills and the modification of thought processes related to criminal behavior.

To further this mission, the Vision of the Windows to Work program is to reduce recidivism and increase employment placement opportunities for participants released from incarceration.