

Independent Living Skills

Independent Living Skills are provided in a group setting and individually with participants. While Independent Living Skills are also provided within the other grants, this contract funds a particular group of eligible youth who are not in need of transitional housing services.

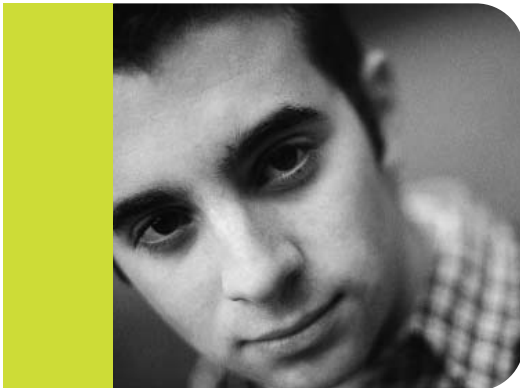
Admission Criteria:

Youth currently in out-of-home care, who have been in out-of-home care for a minimum of six months and who are 15 years of age and older. Also, provides services to youth up to the age of 21 who were in out-of-home care for a minimum of six months and left after the age of 17.

Restrictions:

1. Juvenile Corrections does not count as out-of-home care.

Funding is provided by the Federal Government, Chafee Foster Care Independence Act and is a contract with the Brown County Department of Human Services.



Supporting all people through
life's challenges and transitions.

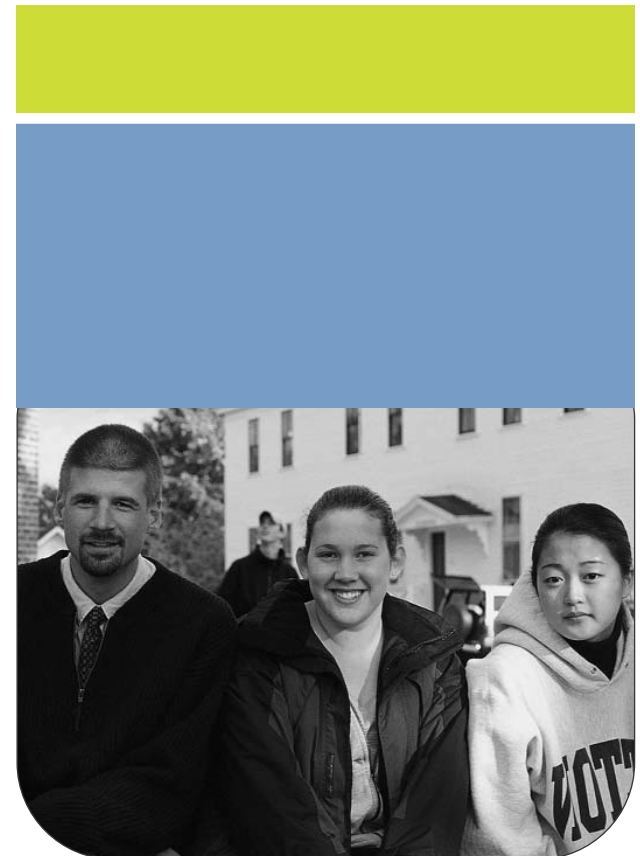


815 Klaus Street, Green Bay, WI 54301
P.O. Box 22308, Green Bay, WI 54305-2308
(920) 438-1616 ext. 2103

Family Services of Northeast Wisconsin, Inc.
(920) 436-6800 (800) 998-9609
www.familyservicesnew.org



transitional
living program
Family Services



Family Services' **Transitional Living Program** (TLP) assists homeless people in gaining self-esteem and learning the skills necessary to become self-sufficient and live independently. Services are provided in the following areas:



- ◆ Finding safe living arrangements (locating and renting safe, stable housing)
- ◆ Life skills training such as budgeting and housekeeping
- ◆ Employability skills training to prepare for, obtain and maintain employment including interviewing techniques, resume writing, job search planning, and social skills on the job
- ◆ Exploration and encouragement of educational, vocational and post-secondary opportunities
- ◆ Interpersonal skill building, goal setting and conflict resolution
- ◆ Information on available services within the community
- ◆ Referrals for any necessary mental and/or physical health treatment
- ◆ Substance abuse prevention information; clients may be required to attend treatment for an addiction as part of their transition plan

An individualized transition plan is developed with maximum input from each participant. Each program area, depending on the funding source, has unique criteria for eligibility and services offered may vary. All apartments are considered "scattered site" and are semi-supervised. They are not owned or operated by Family Services of Northeast Wisconsin.

Youth Transitional Living Program

Admission Criteria:

Youth between the ages of 16 and 21 who do not have a safe or stable living arrangement may be eligible.

Restrictions:

1. Youth can not be involved in a system of government such as the Foster Care System, Community Treatment Programs or Probation and Parole.
2. Individual financial assistance is limited to 21 months, although case management and support may be available for a longer period of time.
3. Participants must be in school, working or have a combination of these to equal a full-time commitment.

Funding provided by the Federal Youth Services Bureau.

Emergency Solutions Grant/ Transitional Housing Program*

Admission Criteria:

Families who are homeless or at risk of becoming homeless, with a head of household age 18 years or older, may be eligible.

Restrictions:

1. Participants must contribute 25% of their income towards rent.
2. Financial assistance is limited and does not pay the full amount of rental expenses.

* Services offered consist mainly of case management, support and skill building, rather than financial assistance.

Funding provided by the Wisconsin Department of Commerce through the Emergency Solutions Grant.

Supportive Housing Grant

Admission Criteria:

Homeless young adults between the ages of 18 and 29 who are struggling with addiction issues.

Restrictions:

1. Financial assistance is limited to 24 months.
2. Eligible participants must have a documented history of homelessness. A written statement from the participant needs to be accompanied by a case worker, homeless shelter staff member or person providing temporary shelter.

Funding is provided by the Supportive Housing Grant from the Housing & Urban Development division of the Federal Government.