



silvercrest group home

Family Services

Supporting all people through life's
challenges and transitions.



silvercrest group home

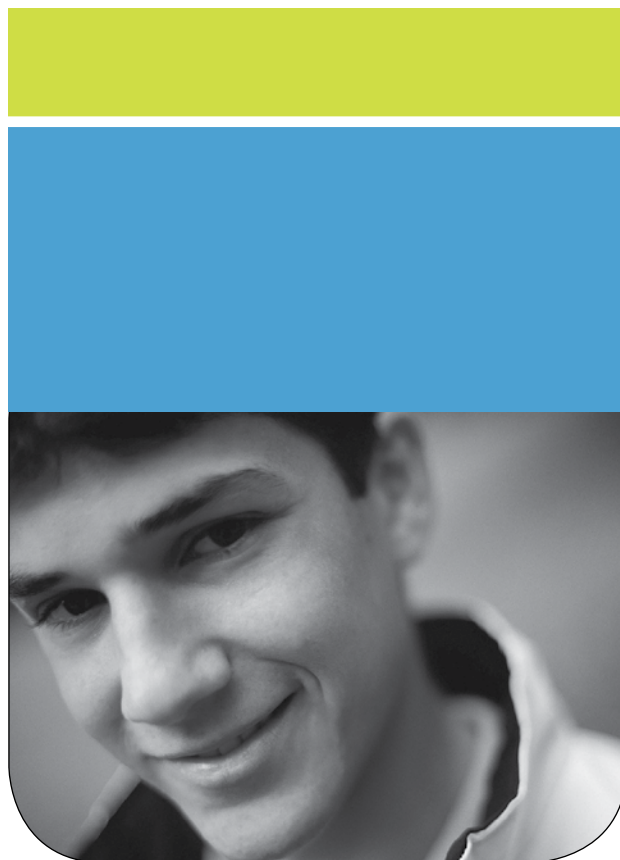
Family Services

1021 Green Acres Lane, Neenah, WI 54956
(920) 722-0375

Family Services of Northeast Wisconsin, Inc.
(920) 436-6800 (800) 998-9609
www.familyservicesnew.org



A United Way Member Agency



Program Overview:

Silvercrest is an eight-bed group home for delinquent males, ages 13 to 17, providing behavior management and counseling services as a means of minimizing harmful behaviors and improving family relationships. All services are designed to reinforce positive change through guidance, support and education.

The average length of placement at Silvercrest is six to nine months, at which time most youth are transitioned back to their homes. Aftercare services are arranged to ensure that residents continue to work toward their goals.

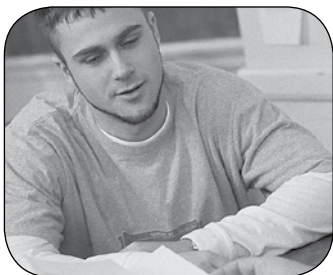
Who we Serve:

Silvercrest serves adolescent males who are involved with the Winnebago County Department of Human Services.

Youth are often placed at Silvercrest under court order, based on a contract with Winnebago County. All Silvercrest residents attend the Neenah School District.

Services offered:

- ◆ Weekly individual and/or family counseling sessions
- ◆ Seasonal Family Fun Nights
- ◆ Educational and recreational opportunities
- ◆ Independent living skills
- ◆ Group therapy on topics such as: problem solving, appropriate peer relations, mood exploration, family patterns, self awareness and AODA education



Behavior management services including daily scoring of each youth using a level system to maintain consistency of behavioral limits, consequences, privileges, and schedules

- ◆ Development of individual treatment plans, weekly treatment goals, and individualized programming as needed

Community Service/Restitution:

Silvercrest arranges community service opportunities to assist residents in completing their service and/or restitution requirements. Activities may include:

- ◆ Participating in the Adopt-A-Highway program
- ◆ Litter pick-up
- ◆ Assisting with Special Olympics, Quarry Quest, Sac-it to Goodwill, Chain Reaction Days, and other community events

Community Partners:

Silvercrest collaborates with the following agencies to assist residents during their time in treatment:

- ◆ Family Doctors and Winnebago County Health Department - Annual health checks and physicals
- ◆ Local Dentists - Regular dental check-ups
- ◆ ShopKo Optical - Eye doctor

appointments

- ◆ OPTIONS - AODA assessment and follow-up care
- ◆ Various Agencies - Psychiatric and/or psychological evaluations and follow-up
- ◆ The Counseling Clinic, Parent Connection, and other Family Services' programs as