



crisis center

Family Services

Protect. Heal. Care.

Sheboygan Mobile Crisis Program



1202 North 31st Street, Sheboygan, WI 53081
(Meetings at this location by appointment only)

24-hour Crisis Line: (920) 459-3151

Family Services of Northeast Wisconsin, Inc.
(920) 436-6800 (800) 998-9609
www.familyservicesnew.org



A United Way Member Agency

What is a Crisis?

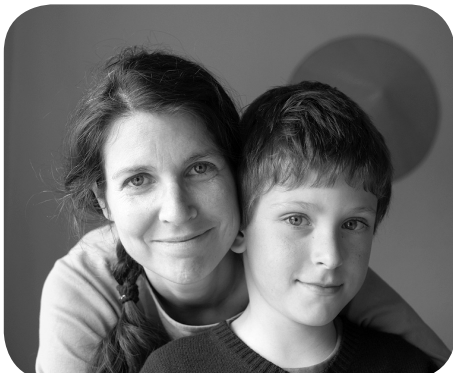
A crisis occurs when people are not prepared to handle a situation and normal coping mechanisms do not work. A crisis is generally short in duration, but it has the potential to produce self-destructive behavior.

About Sheboygan Mobile Crisis

The Sheboygan Mobile Crisis Program is staffed 24 hours a day, seven days a week. All services are provided at **no cost to the client**. The program is staffed by Masters and Bachelors degreed mental health professionals trained in crisis intervention.

Services Provided

- Anonymous telephone counseling
- In-person assessment and short-term counseling anywhere in Sheboygan County
- Assessment for admissions to Turning Point CBRF, a crisis diversion facility
- Active follow-up and assistance
- Suicide prevention and assessment
- Community education and outreach



Common Problem Areas Addressed

- Suicide and Suicide Prevention
- Mental Illness
- Depression and Anxiety
- Grief and Loss
- Alcohol and Drug Abuse
- Parent/Child Conflicts
- Couples Conflicts
- Relationship Issues
- Divorce
- Domestic Violence
- Major Life Changes
- Job Loss
- Stress Management

What to Expect

Counselors will listen to you and provide an assessment of your current situation. A plan will be developed with you to meet your immediate and long-term needs. We will follow up with you to re-evaluate your status and determine if you need additional help.

We provide services to any person within Sheboygan County. Contact with the Mobile Crisis program is confidential.

Where to Call

Call Sheboygan Mobile Crisis at **920-459-3151** from anywhere in Sheboygan County, 24 hours a day, 7 days a week.

Family Services of Northeast Wisconsin:

- State of Wisconsin AODA Outpatient and Mental Health Outpatient
- State of Wisconsin Certified for Residential, Day Treatment, and Crisis Intervention